

AXOPAR 28 CABIN



**AXOPAR**   
LONDON GROUP



# AXOPAR 28 CABIN

Boating people know the weather can be an unpredictable force and being caught out in a rain storm, or being buffeted by strong wind for hours on end can be tiring.

With capability of seating up to five people within a bright and airy, full weather protected environment, there's ample incentive for an owner and guests to spend not just a few hours onboard, but several days and even weeks enjoying their Axopar Cabin version to the full.

The cabin does offer occasional sleeping possibilities for one or two, but customers find the Aft Cabin option is an even better solution for genuinely comfortable, dedicated overnight stays and drop-of-the-hat weekends away will soon become your boating norm.

Above the cabin there's a full-length Webasto manual sliding canvas roof that loves to be thrown open at any time and large, side-opening doors either side, mean there's natural light and ventilation always readily to hand.

Versatile by design, the walkaround side access and aft-deck in standard form is a large, flat and practical space that works well as a home for fishing, or water-sports activities and such-like.

As with other models across our range, the aft-deck can be configured either with, or without, an additional rear-facing bench seat and storage box, or for all-day hospitality, our dedicated drinks serving area and wet-bar module option is a must.

Go further and stay out longer with the Axopar Cabin.

## WATCH VIDEO

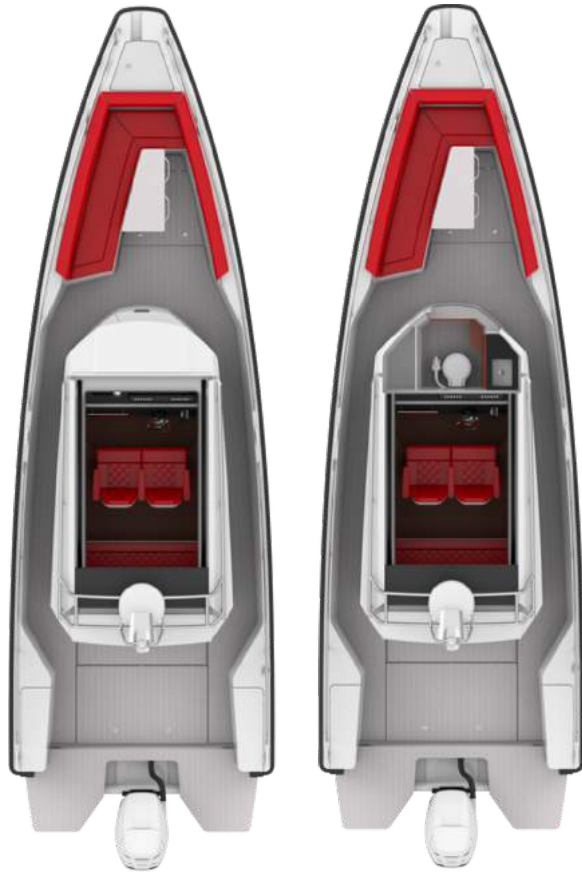








# SPECIFICATIONS



Overall Length (excl. Engine)	8,75 m (28ft 8in)
Overall Length incl. Bathing Platforms	9,18 m (30ft 1in)
Beam	2,95 m (9ft 8in)
Height (Waterline to Roof incl. Light Mast)	2,83 m (9ft 3in)
Draft to props	0,80 m (2ft 8in)
Weight (excl. Engine)	1940 kg (4277lbs)
Passengers	B: 6 persons / C: 9 persons
Berths	2 persons
Fuel capacity	280 l (74 gal)
Construction	GRP
Classification	B – Offshore / C – Coastal
Max speed range	32–46 kts
Outboard engines	200 – 400 hp
Fuel consumption, cruise	1.75 l / nm (350 hp @ 30 knots)
Hull design	Twin stepped 22 degree V “Sharp entry hull”
Overall Length (excl. Engine)	8,75 m (28ft 8in)

# SPECIFICATIONS

**HULL AND DECK:** 130mm added length and 50mm added width, raised hull sides by 80mm, softened spray rails and rounded keel shape. New stringer system based on 37 range. Improved shape and water deflection on bow thruster flanges. Vinylester resin for the first coat of the hull in GRP material, New anti-skid pattern on deck and deck hatches, enlarged service hatch on fore deck, Revised large bumper list with improved cushioning in grey color, Wraparound windscreen and side windows in toughened 6mm glass and tinted light green with optional illuminated 28 designation, Pulpit and cockpit handles in hand polished stainless steel, 6\* Stainless steel cleats aft, mid and bow, Fender storage on aft Deck SB and Port sides, Widened bathing platform with integrated Esthec Platinum decking with and telescopic bathing ladder, Self-draining deck with large diameter scuppers, Integrated engine bracket for outboard engines. Axopar 3D lettering on hull sides and model designation on side glasses.

**HELM CONSOLE:** Soft Touch painted dashboard and console panel, helm panel with passenger side grab rail, Illuminated push buttons and Axopar logo on glass panel, high-gloss helm exclusively in conjunction with factory-installed GPS and Mercury Pre-rig, Leather steering wheel with Axopar logo, 2 x cup holders, 12V power outlet, Compass, Fabric document pocket on console wall, Walnut foot rest.

**LAY-OUT AND SEATING:** Walk-around deck with sociable reshaped L-sofa on foredeck and open aft deck area with enlarged storage under deck with integrated locker for windlass / bow thruster battery, Lowered floor level in cockpit for driving while standing, Driver and co-pilot seats with flip-up front / swivel function and outer armrests, Storage locker under co-pilot seat, "Silververtex" Taupe, Graphite, Sterling and Cobre material on driver/co-pilot seats and aft sofa.

**ELECTRICS:** Main control panel with twin battery switches and automatic fuses for direct supply and 12V outlet located in

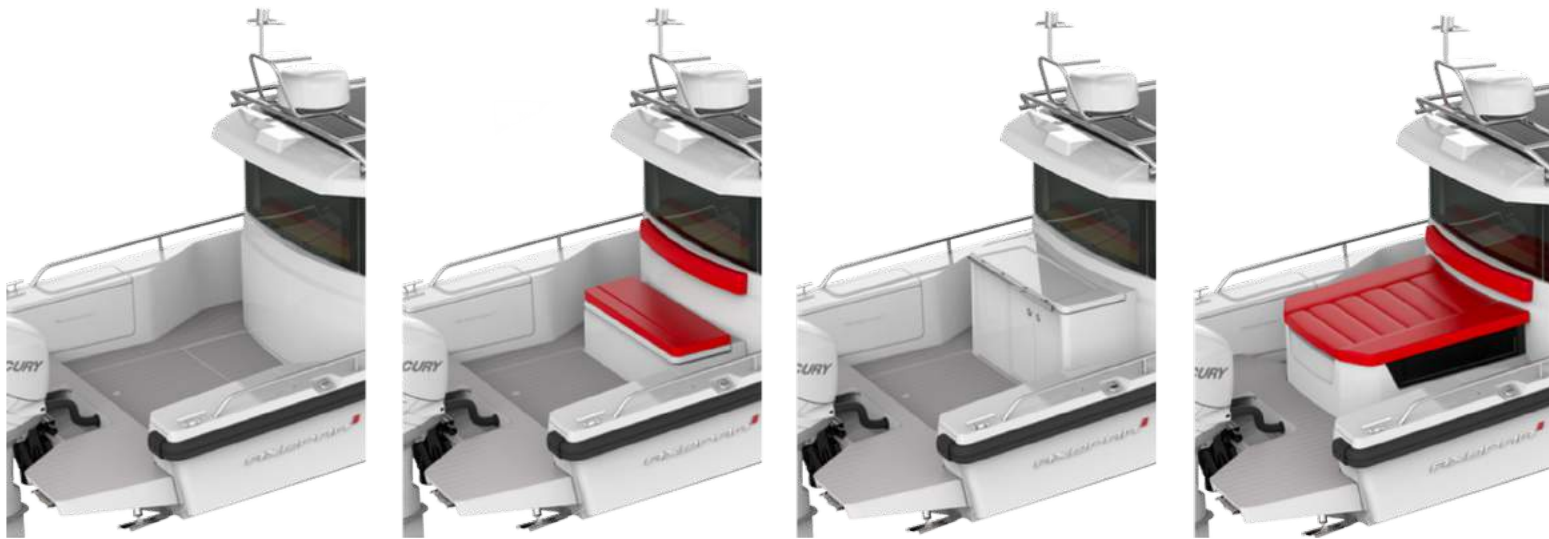
cockpit, Main fuse panel with automatic fuses and 12V outlet located in Deck stowage / toilet area, Led roof spot lights 4pcs, 2 LED spot lights in Deck stowage / toilet, Light mast with anchor light and integrated loops for courtesy flags, Integrated LED navigation lights, Windscreen linked dual wiper arms, Electric bilge pumps x 2, Signal horn. Carbon monoxide detector in cabin, Fire alarm in cabin, Fuel sensor Vema

**FRONT DECK STOWAGE AREA / TOILET:** Enlarged stowage area in center console / optional toilet with raised interior finish with headliner and toiled door in double mold integrated window, warnished oak back panel with integrated mirror

**OTHER:** Aluminium fuel tank 300l (/240 EPA), 2 kg fire extinguisher, Manual bilge pump, Harbor cover for canvas roof, Flagpole.



## LAYOUT ALTERNATIVES FOR AFT DECK



The Axopar 28 Cabin comes with a spacious open aft deck with a large storage hatch in the floor as standard. It can be equipped with an optional bench/storage box, a wet bar module with refrigerator and sink with faucet or a daycruiser aft cabin which sleeps 2 persons.

# AXOPAR 28 BRABUS LINE TRIM PACKAGE



All Axopar 28 models can be ordered with BRABUS Line options.

Style-conscious customers can now differentiate and characterize the look and feel of a standard specification Axopar by ordering from our BRABUS Line options, adding value with discreet interior & exterior trim & styling enhancements.

**Sample a taste of BRABUS refinement by selecting the BRABUS Line Trim Package,**

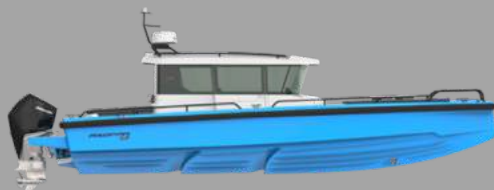
**which includes:** Black rub rail, Suede steering wheel with "doubleB"<sup>®</sup> logo, Exterior black-painted stainless steel parts, Suede co-pilot grab rail with BRABUS logo, Black cleats with "doubleB"<sup>®</sup> logo, New design Axopar seats, "BRABUS" carbon fiber hull signature, "28" carbon fiber plaque, Charcoal Grey Niroxx upholstery w. Diamond stitching and "BRABUS" badge on front seats, Windscreen frame in black.

**BRABUS Line Color Edition:** The BRABUS Line Trim Package can be further enhanced by selecting one of our two exciting new hull, deck & roof colours: Choose from vibrant and playful Miami Blue, or a more discreet Platinum Grey.

**BRABUS Line Premium Package:** If you are ordering a 28 Open or T-Top with BRABUS Line Trim Package, and you want to make an even greater styling impact, our BRABUS Line

Premium Package includes super-cool Baltic Blue cushion upholstery throughout, front deck seat cushions, table, harbour cover, and mooring kit.

[WATCH VIDEO](#)



# STANDARD FEATURES

Some of the features shown may incur an additional charge.



## PILOTHOUSE

Light and airy pilothouse with easy access thanks to wide sliding doors and large canvas sunroof. Large windscreen and side windows provide excellent visibility.



## DASHBOARD

Modern, clean dashboard with Nextel surface with console fitting up to twin 12" optional plotters, a storage well with 12 V power outlet and three cup holders. A groove in the dashboard works as a stand when navigating using paper charts.



## DRIVER / CO-DRIVER SEATS

Length adjustable driver / co-driver seats with armrest and swivel function. Seats also incorporate a flip-up front support for standing while driving.



## AFT BERTH ON CABIN

The bright and roomy aft cabin comfortably sleeps two persons and has indirect lighting in the wall panels and two reading lights + storage space under the mattress.



## L-SOFA ON FOREDECK

The spacious foredeck features a large L-sofa with ample storage space, integrated cup holders and a large self drained anchor box in the bow.



## CABIN ROOF

The huge sliding canvas roof lets you enjoy warm summer days inside the pilothouse and also provides excellent soundproofing by absorbing noise and reducing echoes when closed.



## WALK-AROUND DECK

All 28 models feature a walk-around deck for easy handling and access.



## FENDER STORAGE

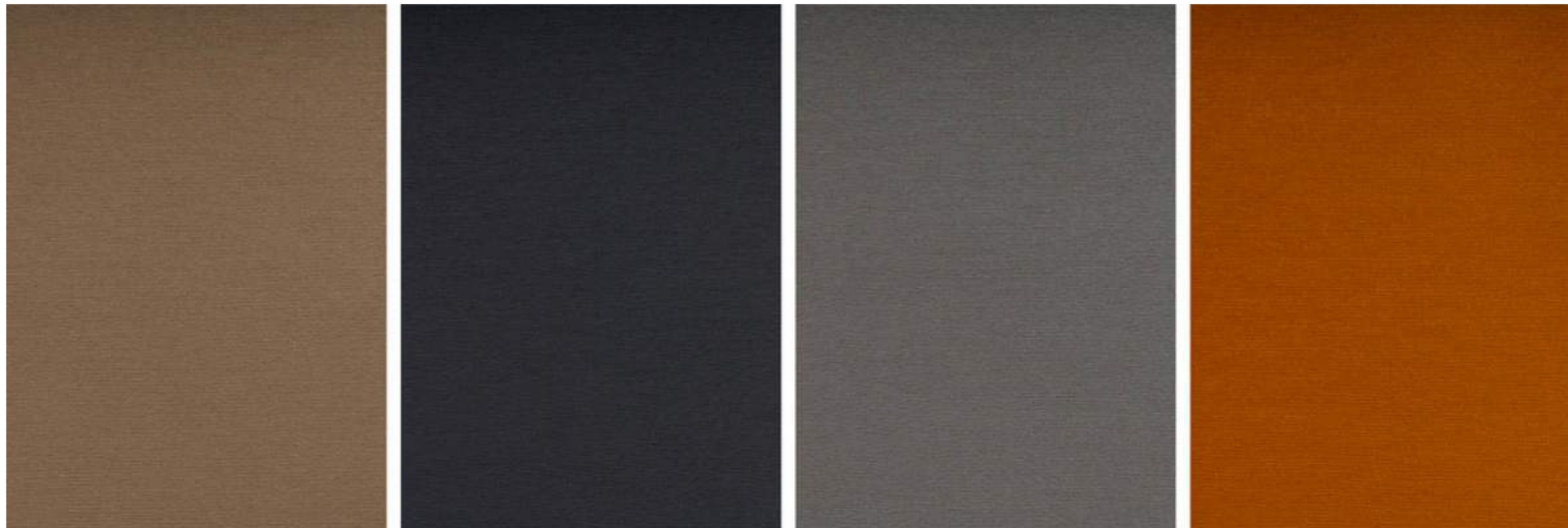
Close-at-hand fender and rope storage integrated on both sides of the aft deck for convenient access when mooring.



## SWIM PLATFORMS

Large, sturdy bathing platforms on both sides of the engine for easy access and fun, with integrated ladder.

## FABRIC COLOURS FOR MY2019 BOATS



The model year 2019 28 foot models are available in the above fabric colours. Silvertex marine quality coated fabrics: Taupe, Graphite, Sterling and Cobre.

# OPTIONAL PACKAGES

## BRABUS LINE TRIM PACKAGE

## BRABUS LINE COLOR UPGRADE BLUE (ONLY W. BL)

## BRABUS LINE COLOR UPGRADE GREY (ONLY W. BL)

## PREMIUM PACKAGE, SILVERTEX

- Table in Esthec Platinum on foredeck
- Foredeck seat cushions and back rest
- Sun bed on foredeck
- Harbour cover for foredeck
- Mooring package: incl. 4 x fenders, 4 x fender covers with axopar

logo, 4 x fender ropes, 4 x mooring ropes 14mm/10m, 5kg Anchor, 30m Anchor rope

## PREMIUM PACKAGE, NIROXX

## DAYCRUISER AFT CABIN (NOT AVAILABLE WITH WETBAR)

## WETBAR (ONLY WITH FRESHWATER OPTION, NOT AVAILABLE WITH DC CABIN )

## TOILET PACKAGE, ELECTRIC FW FLUSH

## LIGHTING PACKAGE(LED DECK LIGHTS, COMFORM LIGHTING IN SALOON, ILLUMINATED 28 LOG

## TOILET PACKAGE, MANUAL SEAWATER FLUSH

- Seawater flush, 40l septic tank, macerator, overboard discharge and dockside pump-out,

## COMPLETE ESTHEC PACKAGE - PLATINUM/WHITE

- Esthec platinum complete exterior flooring in platinum colour with white caulking



BRABUS LINE COLOR UPGRADE Blue (Only w. BL)



BRABUS LINE COLOR UPGRADE Grey (Only w. BL)



Premium Package, Silvertex



Premium Package, Niroxx



DayCruiser Aft Cabin (not available with Wetbar)



Wetbar (only with freshwater option, not available with DC Cabin)



Toilet Package, Electric FW flush



Lighting Package (LED deck lights, Conform Lighting in Saloon, Illuminated 28 log)



Toilet Package, Manual seawater flush



Complete Esthetic package - Platinum/White

# OPTIONAL EXTRAS

## OPTIONS

- Aft deck bench with stowage with cushion (not av. With: Wetbar and Day Cruiser)
- Antifouling, Grey or White
- Bowthruster Side-Power SE40
- Cooler in aft port storage
- Electric grill 220V (only with wet bar and shore power 220V)
- Electric windlass in bow, Engbo Midi 201 + remote control
- Electrical roof system Webasto
- Esthec only on aft cabin roof, Platinum/White, available with DayCruiser Cabin
- Extended wood floor in cabin, Walnut
- Fore deck cushions incl. backrest, Niroxx
- Fore deck cushions incl. backrest, Silvertex
- Freshwater system+45l tank
- Harbor cover for aft deck, Sunbrella Plus RED(av.Only w. DayCruiser Cabin)
- Harbor cover for fore deck, RED (incl. in premium pckg)
- Heater Webasto AT3900
- Hull color Grey
- Interior, Seats Niroxx

- Protective window covers
- Refrigerator in aft port storage (n.a. with Audio upgr.2)
- Search light
- Shore power 230v with 20Ah charger
- Shower on aft deck (only w. freshwater option)
- Side rails
- Sun shade on foredeck, for stationary use
- Sundeck cushions for aft deck, Niroxx(av. Only with DayCruiser Cabin)
- Sundeck cushions for aft deck, Silvertex (Only w DayCruiser Cabin
- Sundeck cushions on fore deck, Niroxx (only w. table)
- Sundeck cushions on fore deck, Silvertex (only w. table)
- Table on foredeck, (incl. in premium package)
- Targa Arch with rodholders and roof rails
- Targa arch with roof rails
- Top loading refrigerator, Dometic CM 42l
- Trim tabs with joystick
- Two aft deck folding seats with table
- Underwater Lights
- Waterski pole

## PRE-RIGGING

- Mercury upgrade package, Active Trim, VV Mobile, TDS

## ELECTRONICS

- Chartplotter Garmin GPSMap 1222 Touch
- Chartplotter Garmin GPSmap 922
- Communication Garmin VHF 115i
- Intelliducer
- Radar GMR18 18HD
- Sonar module Garmin GSD
- Twin Chartplotter Garmin GPSMap 1222 Touch
- Twin Chartplotter Garmin GPSmap 922

## AUDIO OPTIONS

- Audio upgrade1: 4 x speakers + 2ch amplifier
- Audio upgrade2: 1 x subwoofer + upgrade to 4ch amplifier
- Control unit for Fusion system, Helm
- Fusion Entertainment system, incl. 2 x speakers in cockpit





## CABIN AFT DECK

The spacious aft deck features a large storage hatch in the floor and offers lots of possibilities for fishing, water sports and other activities. The aft deck can be equipped with an optional bench / storage box, a wet bar module or an aft cabin.



## DAYCRUISER AFT CABIN

The optional aft cabin features wide side windows, a large 70 cm flush mounted roof-/cargo hatch + a smaller roof hatch for ample ventilation and light in the aft cabin. The inside of the aft cabin now has integrated headliner all around for higher finish.



## DASHBOARD

Modern, clean dashboard with Nextel surface with console fitting up to twin 12" optional plotters, a storage well with 12 V power outlet and three cup holders. A groove in the dashboard works as a stand when navigating using paper charts.



## SOFA AND TABLE

Driver and co-driver seats can be turned to face the sofa for entertaining guests by the optional table.



## SLEEPING POSSIBILITIES IN CABIN MODEL

By sliding the split-sofa forward the pilothouse in the C model sleeps one or two persons + two inside the optional aft cabin.



## PILOTHOUSE PENTRY

Optional refrigerator and sink with faucet under driver / co-driver seats.



## SUNBED

The foredeck can also be converted into an optional sunbed with cushions by lowering the table.



## STOWAGE/TOILET

Large functional compartment accessed from the foredeck with optional toilet. Features storage space with railings keeping bags and other gear in place and an optional faucet and sink is also available when equipping the boat with freshwater.



## AFT DECK SHOWER

To take a quick shower to wash away salt water after a dip in the ocean use the optional shower on aft deck with the fresh water option equipped.



## SIDE RAILS

All models can also be equipped with optional side rails around the entire boat.



## SUNBED

The foredeck can also be converted into an optional sunbed with cushions by lowering the table.



## SUNBED ON AFT CABIN

Optional cushions are available for a comfortable sun deck on top of the optional aft cabin.



## SUN SHADE FOR FOREDECK

More sun and heat than you can handle at times? There is now an optional sun shade in black mesh fabric available for the foredeck area on the TT and C models.



## TABLE ON FOREDECK

To take full advantage of the L-sofa there are optional cushions and a sturdy table available for relaxing and dining.



## CABIN TARGA ARCH WITH ROOF RAILS

The roof can be equipped with an optional targa arch with roof rails. A harbour cover for the canvas roof serves as additional protection for the canvas roof against UV rays and bird droppings.



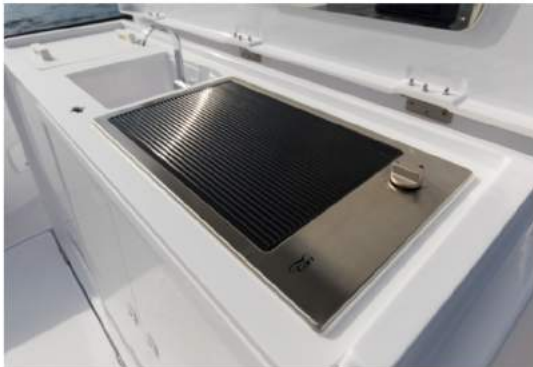
Aft deck bench with stowage with cushion (not av. With: Wetbar and Day Cruiser)



Antifouling, Grey or White



Bowthruster Side-Power SE40



Electric grill 220V (only with wet bar and shore power 220V)



Electric windlass in bow, Engbo Midi 201 + remote control



Electrical roof system Webasto



Esthec only on aft cabin roof, Platinum/White, available with DayDruiser Cabin



Extended wood floor in cabin, Walnut



Fore deck cushions incl. backrest, Niroxx



Fore deck cushions incl. backrest, Silvertex



Freshwater system+45l tank



Harbor cover for aft deck. Sunbrella Plus RED(av.Only w. DayCruiser Cabin)



Harbor cover for fore deck, RED (incl. in premium pckg)



Heater Webasto AT3900



Hull color Grey



Interior, Seats Niroxx



Protective window covers



Refrigerator in aft port storage (n.a. with Audio upgr.2)



Search light



Shore power 230v with 20Ah charger



Shower on aft deck (only w. freshwater option)



Side rails



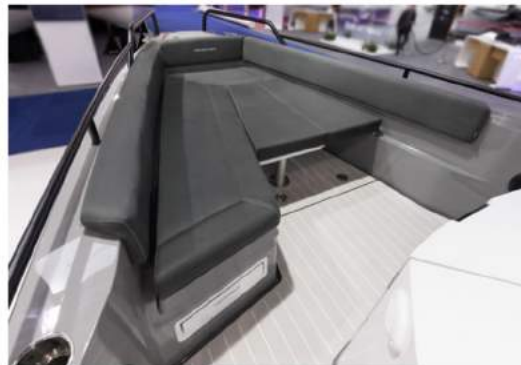
Sun shade on foredeck, for stationary use



Sundeck cushions for aft deck, Niroxx(av. Only with DayCruiser Cabin)



Sundeck cushions for aft deck, Silvertex (Only w DayCruiser Cabin)



Sundeck cushions on fore deck, Niroxx (only w. table)



Sundeck cushions on fore deck, Silvertex (only w. table)



Table on foredeck, (incl. in premium package)



Targa Arch with rodholders and roof rails



Targa arch with roof rails



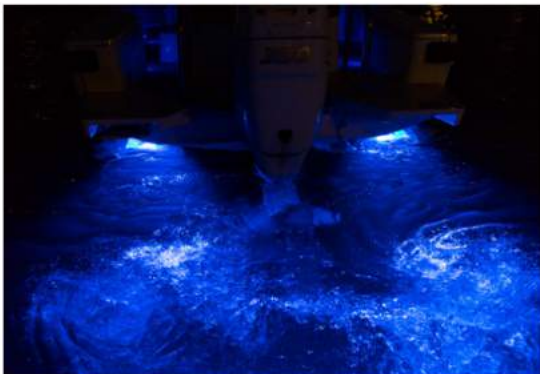
Top loading refrigerator, Dometic CM 421



Trim tabs with joystick



Two aft deck folding seats with table



Underwater Lights



Waterski pole



Mercury upgrade package, Active Trim, VV Mobile, TDS



Chartplotter Garmin GPSMap 1222 Touch



Chartplotter Garmin GPSMap 922



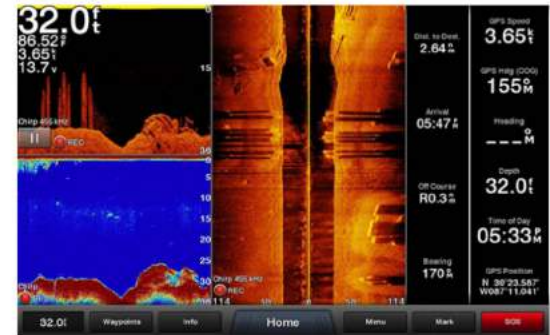
Communication Garmin VHF 115i



Intelliducer



Radar GMR18 18HD



Sonar module Garmin GSD



Twin Chartplotter Garmin GPSMap 1222 Touch



Twin Chartplotter Garmin GPSMap 922



Audio upgrade: 4 x speakers + 2ch amplifier





Audio upgrade: 2x subwoofer + upgrade to 4ch amplifier



Control unit for Fusion system, Helm



Fusion Entertainment system, incl. 2x speakers in cockpit





## OFFICIAL AXOPAR DEALERS

UK & Scotland  
Portugal  
Monaco  
Malta  
Andalucia, Spain  
Egypt

Please visit our website [www.axoparlondongroup.com](http://www.axoparlondongroup.com) for details of your local office or e-mail: [info@axoparlondongroup.com](mailto:info@axoparlondongroup.com)