

AXOPAR 28 T-TOP



AXOPAR 
LONDON GROUP



AXOPAR 28 T-TOP

Sometimes having too much sun can be as unpleasant as not having enough, and Axopar thought about that when they designed the smart-thinking T-Top with large, canvas roof shade, mounted to a sturdy & permanent metal frame.

A highly versatile, multi-purpose, walkaround sports cruiser, form & function have fused together to create the Axopar 28 T-Top version, successfully screening the front and rear passengers from the less pleasant effects of too much sun.

Knowing you and your guests can now spend even more time on the water means the toilet and wash-hand basin and top-loading fridge options, for example, are the kind of useful upgrades Axopar offer to make life afloat that little bit more civilized.

Ideal for those who live too far away from their boat to want to return home each night or perfect for those impromptu weekends away with your spouse or partner – our Aft Cabin option allows comfortable overnight sleeping accommodation for two, with the same space doubling as significant extra stowage capability, when not in use.

For day long hospitality from a dedicated drinks serving area, our fully plumbed-in wet bar module is a clever touch that's bound to impress your friends with an end-of-day sundowner, or day-long supply of your favourite ice-cold beer!

Celebrate your time afloat with the smart-thinking Axopar T-Top.

WATCH VIDEO

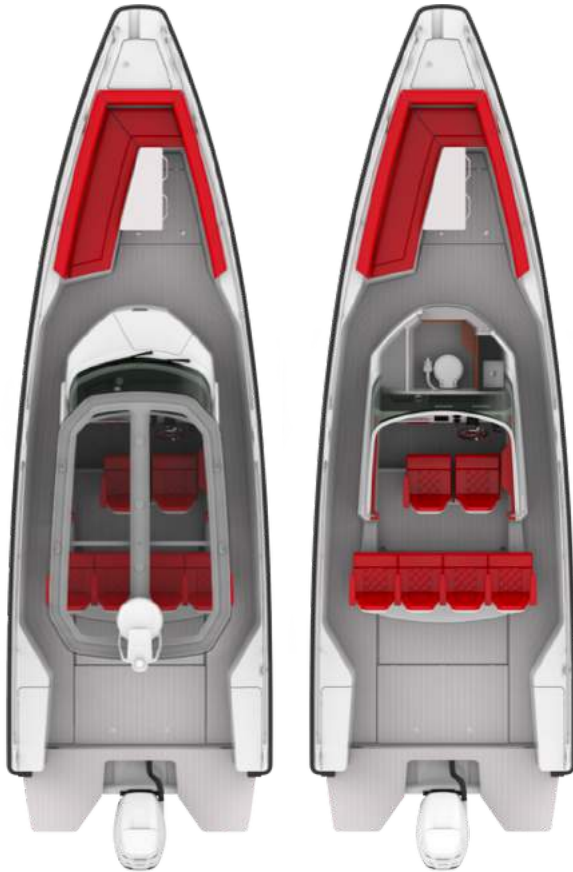








SPECIFICATIONS



Overall Length (excl. Engine)	8,75 m (28ft 8in)
Overall Length incl. Bathing Platforms	9,18 m (30ft 1in)
Beam	2,95 m (9ft 8in)
Height (Waterline to Light Mast)	2,95 m (9ft 8in)
Draft to props	0,80 m (2ft 8in)
Weight (excl. Engine)	1840 kg (4056lbs)
Passengers	B: 6 persons / C: 9 persons
Berths	2 persons (w. opt. aft cabin)
Fuel capacity	280 l (74 gal)
Construction	GRP
Classification	B – Offshore / C – Coastal
Max speed range	32–47 kts
Outboard engines	200 – 400 hp
Fuel consumption, cruise	1.75 l / nm (350 hp @ 30 knots)
Hull design	Twin stepped 22 degree V “Sharp entry hull”

Specifications may be changed without prior notice. Performance may vary due to equipment, weather and load conditions.

SPECIFICATIONS

HULL AND DECK: 130mm added length and 50mm added width, raised hull sides by 80mm, softened spray rails and rounded keel shape. New stringer system based on 37 range. Improved shape and water deflection on bow thruster flanges. Vinylester resin for the first coat of the hull in GRP material, New anti-skid pattern on deck and deck hatches, enlarged service hatch on fore deck, Revised large bumper list with improved cushioning in grey color, Wraparound windscreen and side windows in toughened glass and tinted light green with aluminum window profile painted in white, Pulpit and cockpit handles in hand polished stainless steel, 6* Stainless steel cleats aft, mid and bow, Fender storage on aft Deck SB and Port sides, Widened bathing platform with integrated Esthec Platinum decking with and telescopic bathing ladder, Self-draining deck with large diameter scuppers, Integrated engine bracket for outboard engines. Axopar 3D lettering on hull sides and model designation on side glasses.

HELM CONSOLE: Soft Touch painted dashboard and console panel, helm panel with passenger side grab rail, Illuminated push buttons and Axopar logo on glass panel, high-gloss helm exclusively in conjunction with factory-installed GPS and Mercury Pre-rig, Leather steering wheel with Axopar logo, 2 x cup holders, 12V power outlet, Compass, Fabric document pocket on console wall, Walnut foot rest.

LAY-OUT AND SEATING: Walk-around deck with sociable reshaped L-sofa on foredeck and open aft deck area with enlarged storage under deck with integrated locker for windlass / bow thruster battery, Lowered floor level in cockpit for driving while standing, Driver and co-pilot seats with flip-up front / swivel function and outer armrests, Storage locker under co-pilot seat, Four back seats with outer armrests and storage underneath, "Silvertex" Taupe, Graphite, Sterling and Cobre material on driver/co-pilot seats and aft sofa.

ELECTRICS: Main control panel with twin battery switches and automatic fuses for direct supply and 12V outlet located in cockpit, Main fuse panel with automatic fuses and 12V outlet located in Deck stowage / toilet area, Led roof spot lights 4pcs, 2 LED spot lights in Deck stowage / toilet, Light mast with anchor light and integrated loops for courtesy flags, Integrated LED navigation lights, Windscreen linked dual wiper arms, Electric bilge pumps x 2, Signal horn. Carbon monoxide detector in cabin, Fire alarm in cabin, Fuel sensor Vema

FRONT DECK STOWAGE AREA / TOILET: Enlarged stowage area in center console / optional toilet with raised interior finish with headliner and toiled door in double mold integrated window, warnished oak back panel with integrated mirror

OTHER: Aluminium fuel tank 300l (/240 EPA), 2 kg fire extinguisher, Manual bilge pump, Harbour cover for helm and driver/co-pilot seats and separate harbor cover for aft sofa, Flagpole.

LAYOUT ALTERNATIVES FOR AFT DECK



The Axopar 28 T-Top comes with a spacious open aft deck with a large stowage hatch in the floor as standard. It can be equipped with a wet bar module including a refrigerator and sink with faucet or with an optional daycruiser aft cabin.

AXOPAR 28 BRABUS LINE TRIM PACKAGE



All Axopar 28 models can be ordered with BRABUS Line options.

Style-conscious customers can now differentiate and characterize the look and feel of a standard specification Axopar by ordering from our BRABUS Line options, adding value with discreet interior & exterior trim & styling enhancements. Sample a taste of BRABUS refinement by selecting the BRABUS Line Trim Package, which includes: Black rub rail, Suede steering wheel with "doubleB"[®] logo, Exterior black-painted stainless steel parts, Suede co-pilot grab rail with BRABUS logo, Black cleats with "doubleB"[®] logo, New design Axopar seats, "BRABUS" carbon fiber hull signature, "28" carbon fiber plaque, Charcoal Grey Niroxx upholstery w. diamond stitching and "BRABUS" badge on front seats, Windscreen frame in black.

BRABUS Line Color Edition: The BRABUS Line Trim Package can be further enhanced by selecting one of our two exciting new hull, deck & roof colours: Choose from vibrant and playful Miami Blue, or a more discreet Platinum Grey. BRABUS Line Premium Package: If you are ordering a 28 Open or T-Top with BRABUS

Line Trim Package, and you want to make an even greater styling impact, our BRABUS Line Premium Package includes super-cool Baltic Blue cushion upholstery throughout, front deck seat cushions, table, harbour cover, and mooring kit.

[WATCH VIDEO](#)



STANDARD FEATURES

Some of the features shown may incur an additional charge.



DASHBOARD

Modern, clean dashboard with Nextel surface with console fitting up to twin 12" optional plotters, a storage well with 12 V power outlet and three cup holders.



DRIVER SEATS

Length adjustable driver / co-driver seats with armrest and swivel function. Seats also incorporate a flip-up front support for standing while driving.



BACK SEATS IN COCKPIT

Comfortable seating in the cockpit by the four separate back seats with outer armrests.



STORAGE UNDER BACK SEATS

There is a large storage compartment under the back seats, accessed from the aft deck.



BACK SEATS IN COCKPIT O/TT WITH AFT CABIN

The Open and TT models have a wide middle seat instead of four separate seats when equipped with the optional aft cabin. This gives more comfort when enjoying the aft sundeck thanks to the inclining middle seat backrest.



SPACIOUS AFT DECK

The spacious aft deck features a large storage hatch in the floor and offers lots of possibilities for fishing, water sports and other activities. The aft deck can be equipped with an optional wet bar module or an aft cabin.



WINDSCREEN

High and long windscreen gives great visibility, minimizes draft and keeps you dry in all driving conditions.



AFT CABIN SLEEPING

The bright and roomy aft cabin comfortably sleeps two persons (2m x 1,25m) and has indirect lighting in the wall panels and two reading lights + storage space under the mattress.



AFT CABIN ENTRANCE

The entrance to the aft cabin is through a convenient hatch in the back seats.



L-SOFA ON FOREDECK

The spacious foredeck features a large L-sofa with ample storage space, integrated cup holders and a large self drained anchor box in the bow.



T-TOP ROOF

The T-top roof provides protection from the sun and features a new non-transparent Stamoid canvas as standard for even more weather durability.



WALK-AROUND DECK

All models feature a walk-around deck for easy handling and access.

(Image shows Open model)



CANOPY & SPRAYHOOD TT

The optional Canopy/Sprayhood available for the T-Top model turns the otherwise open TT into essentially a cabin boat with full protection from the elements.



FENDER STORAGE

Close-at-hand fender and rope storage integrated on both sides of the aft deck for convenient access when mooring.



SWIM PLATFORMS

Large, sturdy bathing platforms on both sides of the engine for easy access and fun, with integrated ladder.

FABRIC COLOURS FOR MY2019 BOATS



The model year 2019 28 foot models are available in the above fabric colours. Silvertex marine quality coated fabrics: Taupe, Graphite, Sterling and Cobre.

OPTIONAL PACKAGES

BRABUS LINE TRIM PACKAGE

BRABUS LINE COLOR UPGRADE BLUE (ONLY W. BL)

BRABUS LINE COLOR UPGRADE GREY (ONLY W. BL)

BRABUS LINE PREMIUM PACKAGE, ALL CUSHIONS BLUE (ONLY W. BL)

PREMIUM PACKAGE, SILVERTEX

- Table in Esthec Platinum on foredeck
- Foredeck seat cushions and back rest
- Sun bed on foredeck
- Harbour cover for foredeck
- Mooring package: incl. 4 x fenders, 4 x fender covers with axopar logo, 4 x fender ropes, 4 x mooring ropes 14mm/10m, 5kg Anchor, 30m Anchor rope

PREMIUM PACKAGE, SILVERTEX

- Table in Esthec Platinum on foredeck
- Foredeck seat cushions and back rest
- Sun bed on foredeck
- Harbour cover for foredeck
- Mooring package: incl. 4 x fenders, 4 x fender covers with axopar logo, 4 x fender ropes, 4 x mooring ropes 14mm/10m, 5kg Anchor, 30m Anchor rope

PREMIUM PACKAGE, NIROXX

WETBAR (ONLY W. F/W OPTION, NOT AVAILABLE WITH DC CABIN)

TOILET PACKAGE, ELECTRIC FW FLUSH

COMPLETE ESTHEC PACKAGE - PLATINUM/WHITE

- Esthec platinum complete flooring including cockpit in platinum colour with white caulking

DAYCRUISER AFT CABIN (NOT AVAILABLE WITH WETBAR)

TOILET PACKAGE, MANUAL SEAWATER FLUSH

- Seawater flush, 40l septic tank, macerator, overboard discharge and dockside pump-out.

LIGHTING PACKAGE(LED DECK LIGHTS, COMFORT LIGHTINING IN COCKPIT



BRABUS Line Trim Package



BRABUS LINE COLOR UPGRADE Blue (Only w. BL)



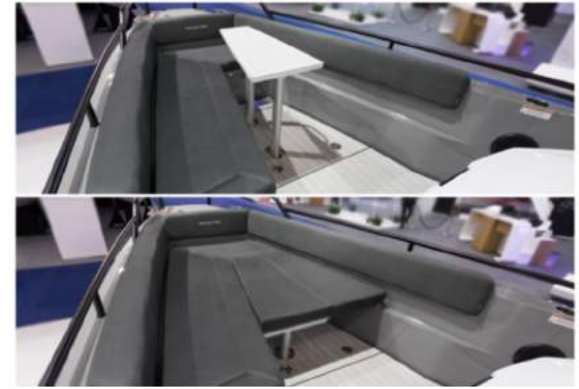
BRABUS LINE COLOR UPGRADE Grey (Only w. BL)



BRABUS LINE Premium Package, All cushions blue (Only w. BL)



Premium Package, Silvertex



Premium Package, Niroxx



Wetbar (only w. f/w option, not available with DC Cabin)



Toilet Package, Electric FW flush



Complete Esthec package - Platinum/White



DayCruiser Aft Cabin (not available with Wetbar)



Toilet Package, Manual seawater flush



Lighting Package(LED deck lights, Comfort Lightening in cockpit)

OPTIONAL EXTRAS

OPTIONS

- Antifouling, Grey or White
- Bowthruster Side-Power SE40
- Canopy, RED
- Cooler in aft port storage
- Electric grill 220V (only with wet bar and shore power 220V)
- Electric windlass in bow, Engbo Midi 201 + remote control
- Esthec in cockpit, Platinum/White
- Esthec only on aft cabin roof, Platinum/White, available with DayCruiser Cabin
- Fore deck cushions incl. backrest, Niroxx
- Fore deck cushions incl. backrest, Silvertex
- Freshwater system+45l tank
- Harbor cover for aft deck, RED (av. Only with DayCruiser Cabin Pack)
- Harbor cover for fore deck, RED (incl. in premium pckg)
- Heater Webasto AT3900
- Hull color Grey
- Refrigerator in aft port storage (n.a. with Audio upgr.2)

- Search light
- Seats, Niroxx
- Shore power 230v with 20Ah charger
- Shower on aft deck (only w. freshwater option)
- Side rails
- Sun shade on foredeck, for stationary use
- Sundeck cushions for aft deck, Niroxx(av. Only with DayCruiser Cabin
- Sundeck cushions for aft deck, Silvertex (Only w. DayCruiser Cabin
- Sundeck cushions on fore deck, Niroxx (only w. table)
- Sundeck cushions on fore deck, Silvertex (only w. table)
- Table on foredeck, (incl. in premium package)
- Top loading refrigerator, Dometic CM 35l
- Trim tabs with joystick
- Two aft deck folding seats with table
- Underwater Lights
- Waterski pole

PRE-RIGGING

- Mercury upgrade package, Active Trim, VV Mobile, TDS

ELECTRONICS

- Chartplotter Garmin GPSMap 1222 Touch
- Chartplotter Garmin GPSmap 922
- Communication Garmin VHF 115i
- Intelliducer
- Radar GMR18 18HD
- Sonar module Garmin GSD
- Twin Chartplotter Garmin GPSMap 1222 Touch
- Twin Chartplotter Garmin GPSmap 922

AUDIO OPTIONS

- Audio upgrade1: 4 x speakers + 2ch amplifier
- Audio upgrade2: 1 x subwoofer + upgrade to 4ch amplifier
- Control unit for Fusion system, Helm
- Fusion Entertainment system, incl. 2 x speakers in cockpit



TABLE ON FOREDECK

To take full advantage of the L-sofa there are optional cushions and a sturdy table available for relaxing and dining.



SUN DECK

The foredeck can also be converted into an optional sunbed with cushions by lowering the table.



AFT CABIN SUNBED

Optional cushions are available for a sunbed on top of the aft cabin and the reclining middle seat gives even more comfort when enjoying the sun.



STOWAGE/TOILET

The foredeck also features a large compartment in front of the helm for stowage, with an optional toilet. An optional faucet and sink is also available when equipping the boat with freshwater.



SIDE RAILS

All models can be equipped with optional side rails around the entire boat.



AFT DECK SHOWER

To take a quick shower to wash away salt water after a dip in the ocean use the optional shower on aft deck with the fresh water option equipped.



TABLE IN COCKPIT

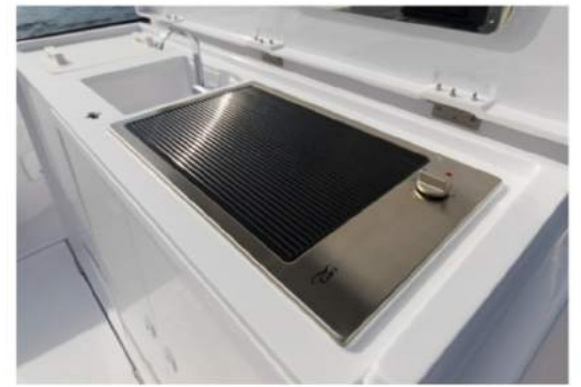
The helm can be turned into a perfect space for entertaining and al fresco dining by the optional table.



Antifouling, Grey or White



Bowthruster Side-Power SE40



Electric grill 220V (only with wet bar and shore power 220V)



Electric windlass in bow, Engbo Midi 201 + remote control



Esthec in cockpit, Platinum/White



Esthec only on aft cabin roof, Platinum/White, available with DayDruiser Cabin



Fore deck cushions incl. backrest, Niroxx



Fore deck cushions incl. backrest, Silververtex



Freshwater system+45l tank



Harbor cover for aft deck, RED
(av. Only with DayCruiser Cabin Pack)



Harbor cover for fore deck, RED (incl. in premium pkg)



Heater Webasto AT3900



Hull color Grey



Refrigerator in aft port storage (n.a. with Audio upgr.2)



Search light



Seats, Niroxx



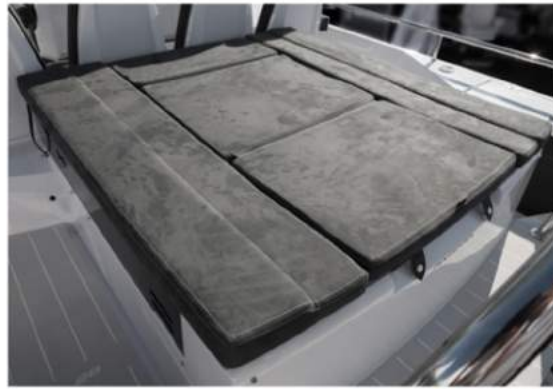
Shore power 230v with 20Ah charger



Shower on aft deck (only w. freshwater option)



Side rails



Sundeck cushions for aft deck, Niroxx
(av. Only with DayCruiser Cabin)



Sundeck cushions for aft deck, Silvertex
(Only w. DayCruiser Cabin)



Sundeck cushions on fore deck, Niroxx (only w. table)



Sundeck cushions on fore deck, Silvertex (only w. table)



Table on foredeck, (incl. in premium package)



Top loading refrigerator, Dometic CM 35I



Trim tabs with joystick



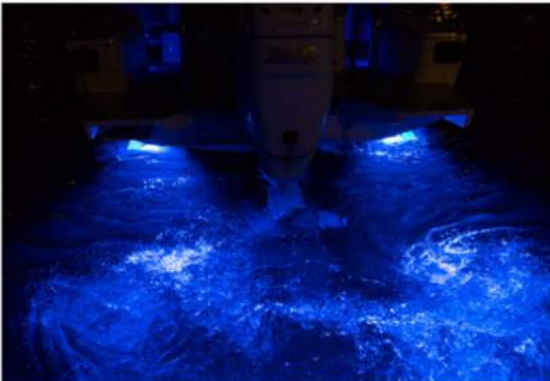
Two aft deck folding seats with table



Canopy, RED



Sun shade on foredeck, for stationary use



Underwater Lights



Waterski pole



Mercury upgrade package, Active Trim, VV Mobile, TDS



Chartplotter Garmin GPSMap 1222 Touch



Chartplotter Garmin GPSMap 922



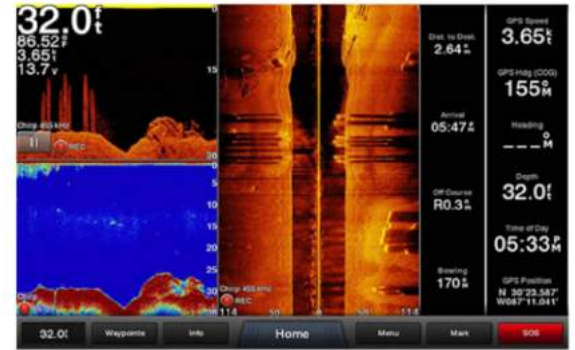
Communication Garmin VHF 115i



Intelliducer



Radar GMR18 18HD



Sonar module Garmin GSD



Twin Chartplotter Garmin GPSMap 1222 Touch



Twin Chartplotter Garmin GPSmap 922



Audio upgrade1: 4 x speakers + 2ch amplifier



Audio upgrade2: 1 x subwoofer + upgrade to 4ch amplifier



Control unit for Fusion system, Helm



Fusion Entertainment system, incl. 2 x speakers in cockpit





OFFICIAL AXOPAR DEALERS

UK & Scotland
Portugal
Monaco
Malta
Andalucia, Spain
Egypt

Please visit our website www.axoparlondongroup.com for details of your local office or e-mail: info@axoparlondongroup.com