

AXOPAR 37 SPORTS CABIN



AXOPAR 
LONDON GROUP



AXOPAR 37 SPORTS CABIN

TURN UP AND TURN HEADS WITH THE AXOPAR 37 SPORTS CABIN

For outright beginners through to seasoned professionals, the 37 Sports Cabin challenges the entire notion of cruising with a more expensive, raised fly-bridge equivalent, and has the power to seduce even the most sceptical of boat buyers.

The enclosed Sports Cabin has a full length canvas top which fully retracts, along with side-opening doors, so that passengers still get a good sense of the outdoors, just as they do from our more exposed Sun Top and T-Top versions.

The interior layout offers the same potential for seating up to six people around an L-shaped table, but there have been more tweaks made inside the cabin too. Found inside every Sports Cabin, for example, there's higher attention to detail, with a whole host of quality touches and improvements including a lacquered walnut wood interior, suede covered steering wheel, Nirrox 100% waterproof upholstery with white diamond patterned stitching and an electrically operated canvas roof as standard. Configured from new either with or without our additional aft cabin accommodation option, turn up and turn heads with the Axopar 37 Sports Cabin.









SPECIFICATIONS



| | |
|-------------------------------|---|
| Overall Length (excl. Engine) | 11,20 m (36ft 9in) |
| Beam | 3,3 m (10ft 10in) |
| Draft to props | 0,85 m (2ft 9in) |
| Weight (excl. Engine) | 3770 kg (8310 lbs) |
| Passengers | 10 persons |
| Berths | 2 + 2 persons |
| Fuel capacity | 730 l (192 gal) |
| Construction | GRP |
| Classification | B – Offshore |
| Max speed range | 35–45 kts |
| Outboard engines | 2 x 225 – 2 x 350 hp (6cyl. engines) |
| Fuel consumption, cruise | 2.6 l / nm (2 x 300 hp @ 28 knots) |
| Hull design | Twin stepped 20 degree V “Sharp entry hull” |
| Overall Length (excl. Engine) | 11,20 m (36ft 9in) |
| Beam | 3,3 m (10ft 10in) |
| Draft to props | 0,85 m (2ft 9in) |

SPECIFICATIONS

HULL AND DECK: Hand laminated hull in Vinylester resin for the first coat of the hull in GRP material, Anti-skid finishing on deck and hatches, Spacious anchor box with drainage in bow, Large stowage locker on foredeck, Heavy duty rub rail in grey, Windscreen and side windows in toughened glass with light green tint, All hardware, pulpit and cockpit handles in hand polished 316 stainless steel, 8 x cleats aft, central and forward, Self-draining deck with large diameter scuppers, Flag pole, Twin large fender storages on aft deck with cooler box function on Port side, Integrated bathing platforms in Esthec Platinum with white caulking and telescopic bathing ladder, Integrated engine bracket for outboard engines.

LAY-OUT AND SEATING: Walk-around cabin with open aft deck area and under deck storage, Optional wet bar, Large sliding side doors on both sides of cabin, Manually operated sliding canvas roof with additional harbour cover, L-sofa with fixed table and

walnut floor on threshold, Large storage compartment under aft sofa, two front seats with flip-up front/swivel function and armrests, Optional sundeck on fore deck, Niroxx upholstery on driver/co-pilot seats and aft sofa, Floor carpets in saloon and front cabin.

FRONT CABIN: Front cabin with lounge seating, large queen size bed and fixed cupboard, Toilet with electric flush with septic tank 70l and deck/hull outlets, Privacy curtains for toilet compartment, Loading hatch from deck to front cabin, Large roof skylight and front window, Wide port lights with flush hatches.

HELM CONSOLE: Integrated iPad slot in dashboard, Soft touch painted dashboard and console panels, Black painted helm panels, Illuminated push buttons,, Seude covered steering wheel with Axopar logo, 2 x Cup holders, Stainless steel grab rail,

12V Power outlet, Compass, Access hatch to front cabin with sliding door.

ELECTRICS: Electric operated canvas roof. LED roof spotlights in saloon and in front cabin, Main control panel with three battery switches and automatic fuses for direct supply and 12V outlet, Fuse panel with automatic fuses and 12V outlet in front cabin, Light mast with anchor light, Navigation lights, Windscreen wipers with washer, Electric bilge pumps x 2, Signal horn.

OTHER: Fixed aluminium fuel tank 730l, Bow thruster preparation in hull, 2 kg Fire extinguisher, Manual bilge pump, air vents in front cabin roof panel.

LAYOUT ALTERNATIVES FOR AFT DECK



The Axopar 37 SC comes with a spacious aft deck with a bench/storage box as standard. It can be equipped with an optional wet bar module with refrigerator, electric grill and sink with faucet. There is also an aft cabin available as an option for those who want accommodation for 4 persons in total. Another feature of the aft cabin is its roof which can be equipped with optional sun cushions.

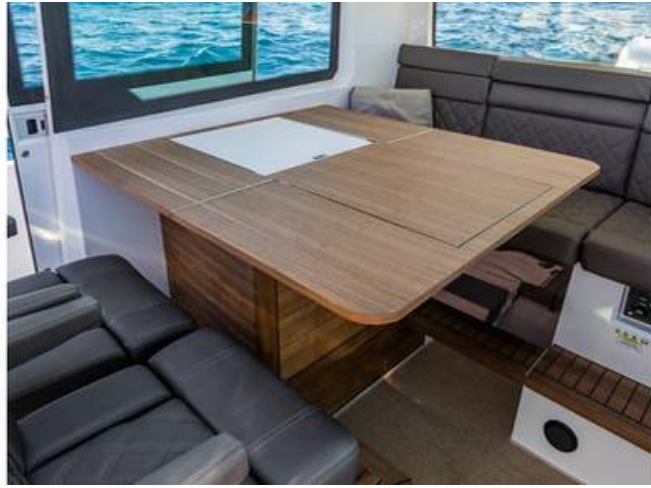
LAYOUT ALTERNATIVES FOR PILOTHOUSE

The spacious Axopar 37 SC features a large, comfortable L-shaped sofa in the back of the cabin. This standard layout can be fitted with an optional 50l refrigerator under the co-pilot seat in the saloon and a sink / gas-hob unit integrated into the cupboard in the front cabin.



The spacious Axopar 37 SC features a large, comfortable L-shaped sofa in the back of the cabin. This standard layout can be fitted with an optional 50l refrigerator under the co-pilot seat in the saloon and a sink / gas-hob unit integrated into the cupboard in the front cabin.





AXOPAR 37 BRABUS LINE TRIM PACKAGE



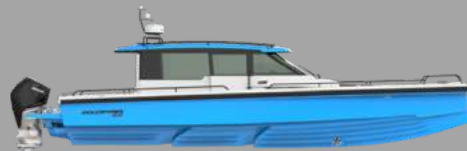
All Axopar 37 models can be ordered with BRABUS Line options.

Style-conscious customers can now differentiate and characterize the look and feel of a standard specification Axopar by ordering from our BRABUS Line options, adding value with discreet interior & exterior trim & styling enhancements.

Sample a taste of BRABUS refinement by selecting the BRABUS Line Trim Package, which includes: Black rub rail, Suede steering wheel with "doubleB"[®] logo, Exterior black-painted stainless steel parts, Suede co-pilot grab rail with BRABUS logo, Black cleats with "doubleB"[®] logo, New design Axopar seats, Axopar BRABUS Line hull signature, Niroxx upholstery w. diamond stitching, Axopar model plaque in carbon fibre, BRABUS Shadow[®] cockpit GRP table (T-Top & Sun-Top only), BRABUS Shadow[®] design Sun-Top roof (Sun-Top only), BRABUS Shadow[®] design light mast (Sun-Top only), Electrically operated sun roof awning (Sun-Top only).

BRABUS Line Color Edition: The BRABUS Line Trim Package can be further enhanced by selecting one of our two exciting new hull and roof colours: Choose from vibrant and playful Miami Blue, or a more discreet Platinum Grey.

BRABUS Line Premium Package: If you are ordering a 37 T-Top or Sun-Top with BRABUS Line Trim Package, and you want to make an even greater styling impact, our BRABUS Line Premium Package includes super-cool Baltic Blue cushion upholstery throughout, front deck seat cushions, table, harbour cover, and mooring kit.



STANDARD FEATURES

Some of the features shown may incur an additional charge.



FORECABIN

All 37 models have a spacious and bright forecabin with lounge seating, a queen size bed, a fixed cupboard and a toilet with privacy curtains.



ACCESS HATCH TO FORECABIN

Access to the forecabin through the sliding access hatch next to the console.

[Image shows SC model]



HELM CONSOLE

Modern, clean dashboard design with console fitting up to two 12" optional plotters. The console features illuminated pushbuttons, leather steering wheel (37 SC suede) with tilt function, 2 x cup holders, co-pilot grab rail, 12V power outlet and a compass.

[Image shows SC model]



C/SC AFT CABIN BERTH

The daycruiser aft cabin offers a bright and roomy interior which comfortably sleeps two persons and has roof hatches and windows on each side for maximum light intake.



FENDER STORAGE & COOLER BOX

There are two large fender and rope storages on aft deck with cooler box function on port side.



ANCHOR BOX AND STOWAGE LOCKER

The bow features an anchor box with drainage and a large stowage locker.



C/SC AFT CABIN ENTRANCE

The entrance to the aft cabin on the C and SC model is through the middle part of the sofa.



C/SC AFT CABIN SUNBED

The aft cabin can be equipped with optional cushions for a second sunbed onboard.



WALK-AROUND DECK

All 37 models feature a walk-around deck for easy handling and access.

(Image shows TT model)



LOADING HATCH

The 37 range features a large cargo hatch in the front cabin roof for easy and fast loading of gear into the boat.

(Image shows C model)



PILOTHOUSE

The airy and bright pilothouse features a large L-sofa with a storage compartment beneath and a table. See layout section for alternative layout with kitchen module.

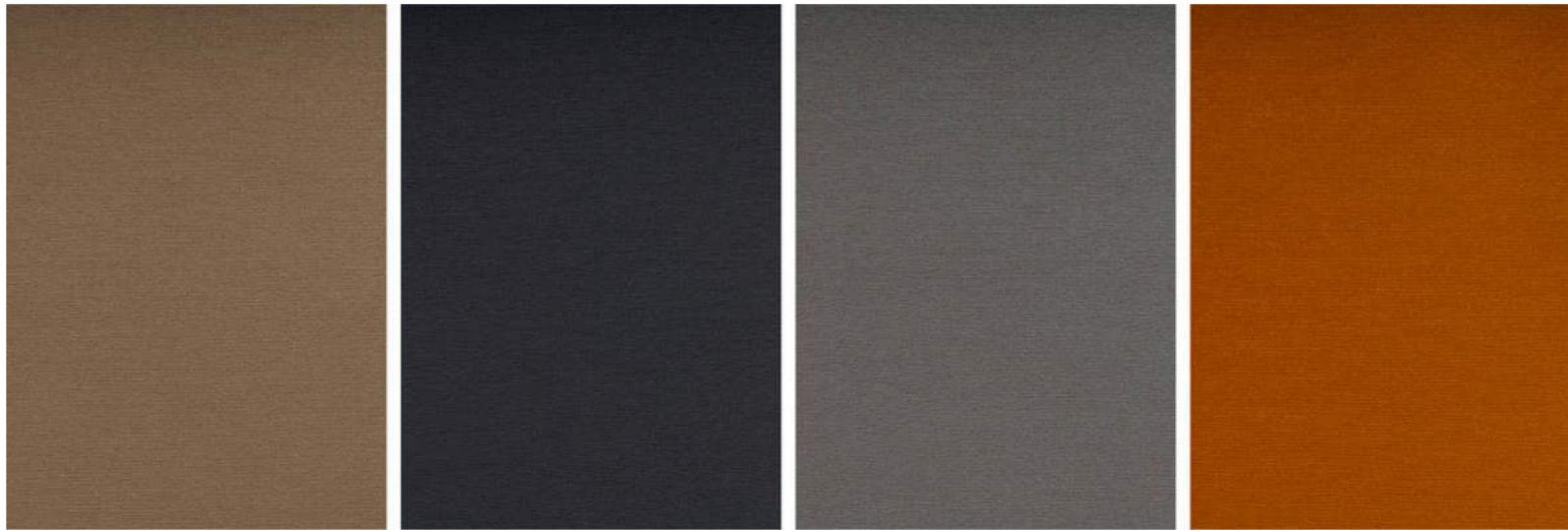
(Image shows SC model)



SLIDING CANVAS ROOF

The sliding canvas roof lets you open up a large part of the roof letting loads of light into the pilothouse to enjoy warm summer days and also provides excellent soundproofing inside the pilothouse by absorbing noise and reducing echoes when closed. A harbour cover serves as protection for the canvas roof against UV rays and bird droppings.

FABRIC COLOURS FOR MY2019 BOATS



The model year 2019 37 foot models are available in the above fabric colours. Silvertex marine quality coated fabrics: Taupe, Graphite, Sterling and Cobre.

OPTIONAL PACKAGES

BRABUS LINE TRIM PACKAGE

BRABUS LINE COLOR UPGRADE BLUE (ONLY W. BL)

BRABUS LINE COLOR UPGRADE GREY (ONLY W. BL)

PREMIUM PACKAGE, SILVERTEX

- Sun deck cushions with twin stitching on foredeck
- Harbour

cover for sun deck • LED deck lights x 14 • "Comfort" indirect lighting in front cabin • Mooring package: incl. 6 x fenders, 6 x fender covers with Axopar logo, 6 x fender ropes, 4 x mooring ropes 16mm/10m • 12,5kg anchor + 30m anchor rope

PREMIUM PACKAGE, NIROXX

DAY CRUISER AFT CABIN PACKAGE (NOT AV. WITH WET BAR)

WET BAR PACKAGE (NOT AV. WITH DAY CRUISER CABIN)

KITCHEN PACKAGE (ONLY W/O L-SOFA LAYOUT)

COMPLETE ESTHEC PACKAGE - PLATINUM/WHITE



BRABUS Line Trim Package



BRABUS LINE COLOR UPGRADE Blue (Only w. BL)



BRABUS LINE COLOR UPGRADE Grey (Only w. BL)



Premium Package, Silvertex



Premium Package, Niroxx



Day Cruiser aft cabin package (not av. with Wet bar)

OPTIONAL EXTRAS

OPTIONS

- Additional seating cushions on foredeck
- Aft deck folding seats (only w/o Day Cruiser Cabin)
- Antifouling, Grey or White
- Bowthruster Side-Power SE60
- Closed toilet wall
- Electric grill 230V (only w. wet bar and shore power 230V)
- Electric windlass in stern, Engbo Midi 201 + remote control
- Electrical roof system Webasto
- Fishing targa arch (2 extra rod holders)
- Folding anchor windlass in bow + remote control (only with bow thruster)
- Gas hob with sink in front cabin (only with FW system)
- Harbor cover for aft deck, Sunbrella RED (only with aft cabin)
- Harbor cover for fore deck, RED
- Heater Webasto AT3900 (not available with Airconditioning)
- Heater Webasto AT5500 (not available with Airconditioning)
- Hull color Grey
- LED courtesy lights, front cabin and main cabin
- LED deck lights, 11pcs (incl. in premium package)
- Livewell STBD aft storage

- Protective window covers, Sunbrella Plus
- Refrigerator in main cabin, Dometic CRX CM50
- Search light
- Seats, Niroxx
- Shore Power 230V with 40Ah charger
- Shower on Aft Deck
- Side rails
- Sink in front cabin
- Sun shade on aft deck, for stationary use
- Sun shade on foredeck, for stationary use
- Sundeck cushions for aft deck, Niroxx (only with aft cabin)
- Sundeck cushions for aft deck, Silvertex (only with aft cabin)
- Sundeck cushions on fore deck, Niroxx
- Sundeck cushions on fore deck, Silvertex
- Targa arch with roof rails
- Teak table on front deck
- Underwater lights
- Waterski pole
- Wood floor in front cabin
- Wood floor in main cabin

PRE-RIGGING

- Mercury upgrade package, Active Trim, VV Mobile, TDS

ELECTRONICS

- Chartplotter Garmin GPSMap 1222 Touch
- Chartplotter Garmin GPSmap 922
- Communication Garmin VHF300i
- Intelliducer
- Radar GMR18 18HD
- Sonar module Garmin GSD
- Twin Chartplotter Garmin GPSMap 1222 Touch
- Twin Chartplotter Garmin GPSmap 922

AUDIO OPTIONS

- Audio upgrade2, 1 x subwoofer on aft deck and 5ch amplifier (only w. UpgradeAudio)
- Audio upgrade1, 4 x speakers + 2x 4ch amplifier
- Control unit for Fusion system, Front Cabin
- Control unit for Fusion system, Helm
- Fusion Entertainment system, incl. 4 x speakers



SUNBED ON FOREDECK

The foredeck features a large sunbed with cup holders and optional cushions.



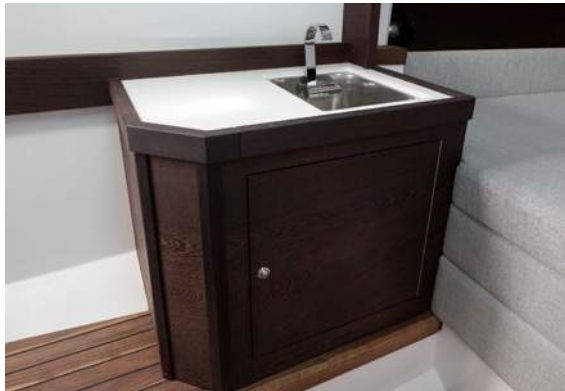
AFT CABIN BERTH

The optional day cruiser aft cabin offers a bright and roomy interior which comfortably sleeps two persons and has roof hatches and windows on each side for maximum light intake.



AFT CABIN SUNBED

The aft cabin can be equipped with optional cushions for a second sunbed onboard.



CABINET

The cabinet in the forecabin can be equipped with an optional sink with faucet and a gas hob. If you prefer to have a kitchen module in the cockpit instead (C/SC) please have a look in the layout section at the alternative layout of the cockpit.



Additional seating cushions on foredeck



Aft deck folding seats (only w/o Day Cruiser Cabin)



Antifouling, Grey or White



Bowthruster Side-Power SE60



Closed toilet wall



Electric grill 230V (only w. wet bar and shore power 230V)



Fishing targa arch (2 extra rod holders)



Folding anchor windlass in bow + remote control (only with bow thruster)



Gas hob with sink in front cabin (only with FW system)



Harbor cover for aft deck, Sunbrella RED (only with aft cabin)



Harbor cover for fore deck, RED



Heater Webasto AT3900 (not available with Airconditioning)



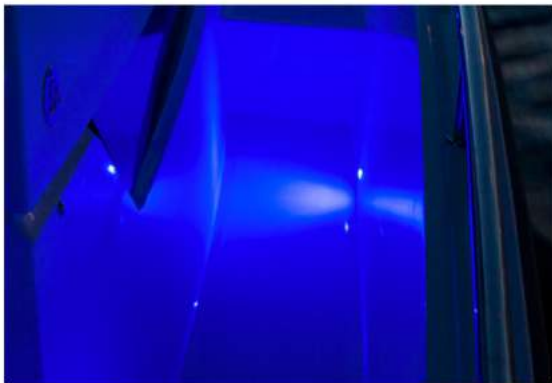
Heater Webasto AT5500 (not available with Airconditioning)



Hull color Grey



LED courtesy lights, front cabin and main cabin



LED deck lights, 11pcs (incl. in premium package)



Livewell STBD aft storage



Protective window covers, Sunbrella Plus



Refrigerator in main cabin, Dometic CRX CM50



Search light



Shore Power 230V with 40Ah charger



Shower on Aft Deck



Side rails



Sink in front cabin



Sun shade on aft deck, for stationary use



Sun shade on foredeck, for stationary use



Sundeck cushions for aft deck, Niroxx (only with aft cabin)



Sundeck cushions for aft deck, Silvertex (only with aft cabin)



Sundeck cushions on fore deck, Nirox



Sundeck cushions on fore deck, Silvertex



Targa arch with roof rails



Teak table on front deck



Waterski pole



Wood floor in front cabin



Wood floor in main cabin



Mercury upgrade package, Active Trim, VV Mobile, TDS



Chartplotter Garmin GPSMap 1222 Touch



Chartplotter Garmin GPSMap 922



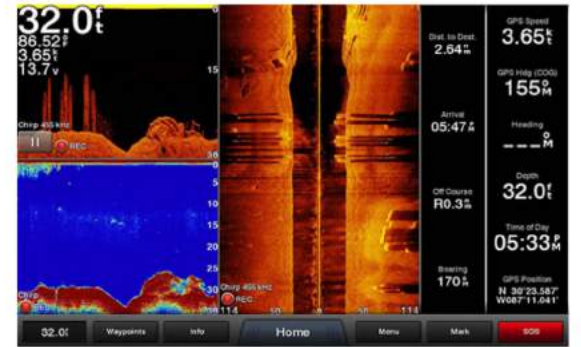
Communication Garmin VHF300i



Intelliducer



Radar GMR18 18HD



Sonar module Garmin GSD



Twin Chartplotter Garmin GPSMap 1222 Touch



Twin Chartplotter Garmin GPSMap 922



Audio upgrade2, 1 x subwoofer on aft deck and 5ch amplifier (only w. UpgradeAudio)



Audio upgrade1, 4 x speakers + 2x 4ch amplifier



Control unit for Fusion system, Front Cabin



Control unit for Fusion system, Helm



Fusion Entertainment system, incl. 4 x speakers





OFFICIAL AXOPAR DEALERS

UK & Scotland
Portugal
Monaco
Malta
Andalucia, Spain
Egypt

Please visit our website www.axoparlondongroup.com for details of your local office or e-mail: info@axoparlondongroup.com