

AXOPAR 37 T-TOP



AXOPAR 
LONDON GROUP



AXOPAR 37 T-TOP

REDEFINE YOUR BOATING EXPERIENCE WHATEVER YOU'RE LOOKING FOR

Promising unforgettable days on the water, the shaded Axopar 37 T-Top is perfect if you love water sports and like to sunbathe where possible. The design ensures your family and guests will enjoy that wind-in-the-hair feeling, but still arrive in cool comfort and true boating style.

With plenty of freedom to relax and move around, you'll find the uncluttered deck layout ideal for owners wishing to bring, for example, scuba-diving gear, or fishing tackle with them, most of the time.

There are seven fixed seats underneath a permanently fixed, rigid T-Top and with the fairly unique and versatile canopy option in place, this boat can still be used anywhere around the world, even in winter.

With 'queen-size' overnight accommodation for two from the standard double cabin, it's great to know you can embark on the occasional long-distance, overnight cruise to that favourite coastal destination or little known private and secluded bay.

WATCH VIDEO









SPECIFICATIONS



Overall Length (excl. Engine)	11,20 m (36ft 9in)
Beam	3,3 m (10ft 10in)
Draft to props	0,85 m (2ft 9in)
Weight (excl. Engine)	3590 kg (7910lbs)
Passengers	10 persons
Berths	2 persons (with optional aft cabin 2+2)
Fuel capacity	730 l (192 gal)
Construction	GRP
Classification	B – Offshore
Max speed range	35–45 kts
Outboard engines	2 x 225 – 2 x 350 hp (6cyl. engines)
Fuel consumption, cruise	2.6 l / nm (2 x 300 hp @ 28 knots)
Hull design	Twin stepped 20 degree V “Sharp entry hull”
Overall Length (excl. Engine)	11,20 m (36ft 9in)
Beam	3,3 m (10ft 10in)
Draft to props	0,85 m (2ft 9in)

SPECIFICATIONS

HULL AND DECK: Hand laminated hull in Vinylester resin for the first coat of the hull in GRP material, Anti-skid finishing on deck and hatches, Spacious anchor box with drainage in bow, Large stowage locker on foredeck, Heavy duty rub rail in grey, Windscreen and side windows in toughened glass with light green tint and aluminium window profiles painted in white, All hardware, pulpit and cockpit handles in hand polished 316 stainless steel, 8 x cleats aft, central and forward, Self-draining deck with large diameter scuppers, Flag pole, Twin large fender storages on aft deck with cooler box function on Port side, Integrated bathing platforms in Esthec Platinum with white caulking and telescopic bathing ladder, Integrated engine bracket for outboard engines.

LAY-OUT AND SEATING: Walk-around deck and open aft deck area with storage under deck, optional wet bar or day cruiser cabin on aft deck, Large seating area with four separate seats and fixed table in aft cockpit with cargo compartment under

deck, three front seats with flip-up front and armrests with swivel function, Centre helm driving position with lowered floor level, T-Top roof and arches in white colour with optional rear sliding sun awning, Optional sundeck on fore deck, "Silververtex" Beige, Meteor or Mandarin material on driver/co-pilot seats and aft seats, Harbour cover for helm and front seats, separate cover for aft seats.

FRONT CABIN: Front cabin with lounge seating, large queen size bed and fixed cupboard, Toilet with electric flush with septic tank 70l and deck/hull outlets, Privacy curtains for toilet compartment, Loading hatch from deck to front cabin, Large roof skylight and front window, Wide port lights with flush hatches, Floor carpets.

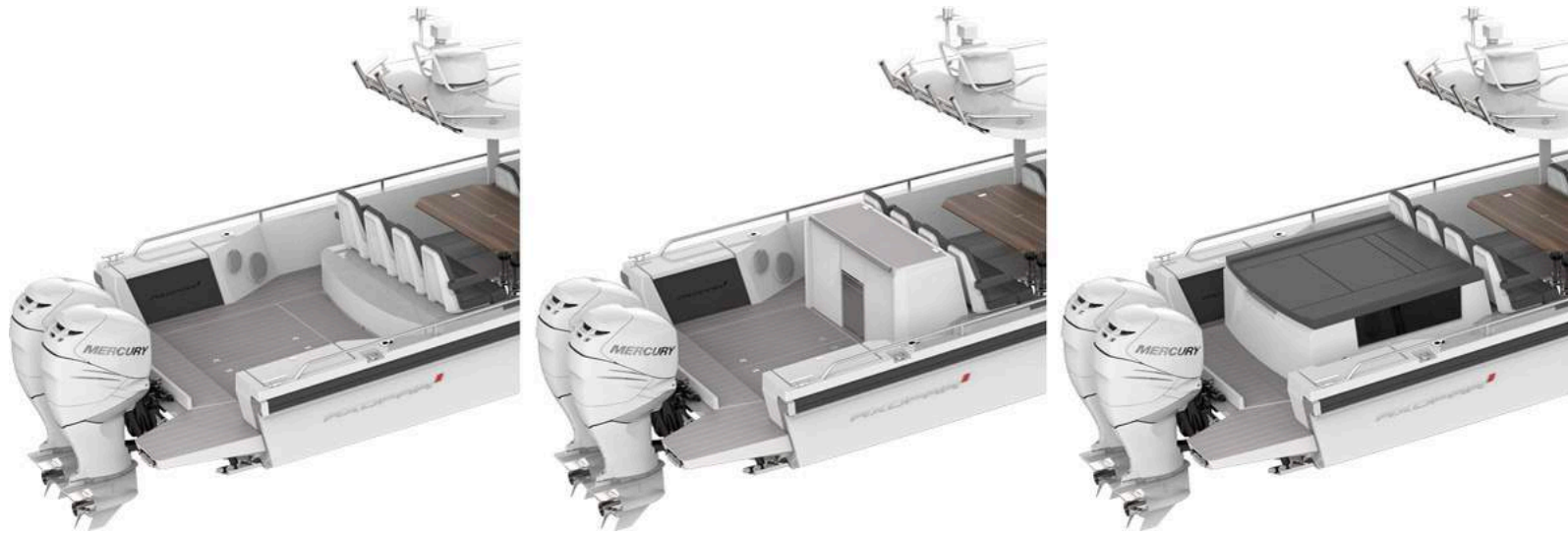
HELM CONSOLE: Integrated iPad slot in dashboard, Soft touch painted dashboard, helm and console panels, Illuminated push buttons, Leather steering wheel with Axopar logo, 2 x cup

holders, Co-pilot grab rail, 12V power outlet, Compass, Access hatch to front cabin in soft touch black paint with metallic silver painted sliding door.

ELECTRICS: LED T-Top roof lights and spot lights in front cabin, Main control panel with three battery switches and automatic fuses for direct supply and 12V outlet, Fuse panel with automatic fuses and 12V outlet in front cabin, Light mast with anchor light, Navigation lights, Heavy duty windscreen wiper, Electric bilge pumps x 2, Signal horn.

OTHER: Fixed aluminium fuel tank 730l, Bow thruster preparation in hull, 2 kg Fire extinguisher, Manual bilge pump, Harbour cover for helm and front seats, separate cover for aft seats.

LAYOUT ALTERNATIVES FOR AFT DECK



The Axopar 37 T-Top comes with a spacious open aft deck as standard. It can be equipped with an optional wet bar module with refrigerator, electric grill and sink with faucet. There is also an aft cabin available as an option for those who want accommodation for 4 persons in total. Another feature of the aft cabin is its roof which can be equipped with optional sun cushions.

AXOPAR 37 BRABUS LINE TRIM PACKAGE



All Axopar 37 models can be ordered with BRABUS Line options.

Style-conscious customers can now differentiate and characterize the look and feel of a standard specification Axopar by ordering from our BRABUS Line options, adding value with discreet interior & exterior trim & styling enhancements.

Sample a taste of BRABUS refinement by selecting the BRABUS Line Trim Package, which includes: Black rub rail, Suede steering wheel with "doubleB"[®] logo, Exterior black-painted stainless steel parts, Suede co-pilot grab rail with BRABUS logo, Black cleats with "doubleB"[®] logo, New design Axopar seats, Axopar BRABUS Line hull signature, Niroxx upholstery w. diamond stitching, Axopar model plaque in carbon fibre, BRABUS Shadow[®] cockpit GRP table (T-Top & Sun-Top only), BRABUS Shadow[®] design Sun-Top roof (Sun-Top only), BRABUS Shadow[®] design light mast (Sun-Top only), Electrically operated sun roof awning (Sun-Top only).

BRABUS Line Color Edition: The BRABUS Line Trim Package can be further enhanced by selecting one of our two exciting new hull and roof colours: Choose from vibrant and playful Miami Blue, or a more discreet Platinum Grey.

BRABUS Line Premium Package: If you are ordering a 37 T-Top or Sun-Top with BRABUS Line Trim Package, and you want to make an even greater styling impact, our BRABUS Line Premium Package includes super-cool Baltic Blue cushion upholstery throughout, front deck seat cushions, table, harbour cover, and mooring kit.



STANDARD FEATURES

Some of the features shown may incur an additional charge.



FORECABIN

All 37 models have a spacious and bright forecabin with lounge seating, a queen size bed, a fixed cupboard and a toilet with privacy curtains.



ACCESS HATCH TO FORECABIN

Access to the forecabin through the sliding access hatch next to the console.



HELM CONSOLE

Modern, clean dashboard design with console fitting up to two 12" optional plotters. The console features illuminated pushbuttons, leather steering wheel with tilt function, 2 x cup holders, co-pilot grab rail, 12V power outlet and a compass.



SUNBED ON FOREDECK

The foredeck features a large sunbed with cup holders and optional cushions.



ADJUSTABLE TABLE IN COCKPIT

The 37 TT and ST models are fitted with an adjustable table in the cockpit. The front seats can be turned to face the sofa for entertaining 7 guests by the table.



DAY CRUISER AFT CABIN

All models can be equipped with a day cruiser cabin on aft deck sleeping 2 persons with twin flush Lewmar roof hatches and side windows.



AFT CABIN ENTRANCE

The entrance to the aft cabin on the TT/ST models is through the middle part of the aft sofa in the cockpit.



WALK-AROUND DECK

All 37 models feature a walk-around deck for easy handling and access.
(Image shows TT model)



LOADING HATCH

The 37 range features a large cargo hatch in the front cabin roof for easy and fast loading of gear into the boat.
(Image shows C model)



FENDER STORAGE & COOLER BOX

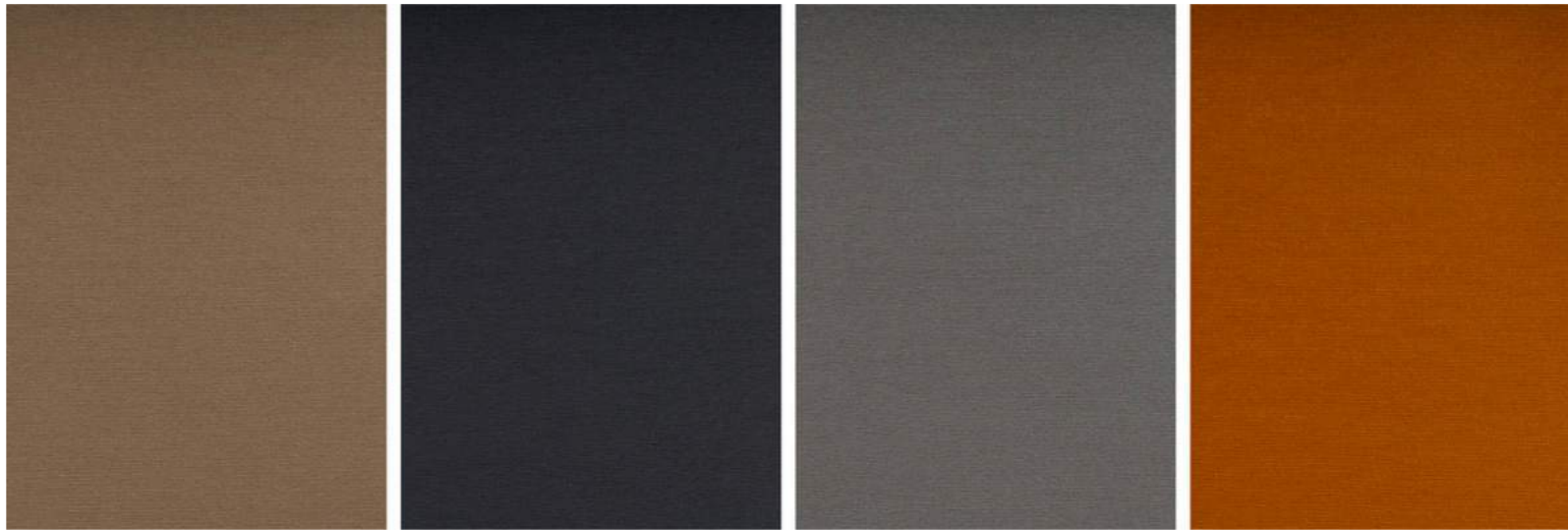
There are two large fender and rope storages on aft deck with cooler box function on port side.



ANCHOR BOX AND STOWAGE LOCKER

The bow features an anchor box with drainage and a large stowage locker.

FABRIC COLOURS FOR MY2019 BOATS



The model year 2019 37 foot models are available in the above fabric colours. Silvertex marine quality coated fabrics: Taupe, Graphite, Sterling and Cobre.

OPTIONAL PACKAGES

BRABUS LINE TRIM PACKAGE

BRABUS LINE COLOR UPGRADE BLUE (ONLY W. BL)

BRABUS LINE COLOR UPGRADE GREY (ONLY W. BL)

BRABUS LINE PREMIUM PACKAGE, ALL CUSHIONS BLUE (ONLY W. BL)

PREMIUM PACKAGE, SILVERTEX

- Sun deck cushions with twin stitching on foredeck
- Harbour cover for sun deck
- LED deck lights x 14
- "Comfort" indirect

lighting in front cabin • Mooring package: incl. 6 x fenders, 6 x fender covers with Axopar logo, 6 x fender ropes, 4 x mooring ropes 16mm/10m • 12,5kg anchor + 30m anchor rope

PREMIUM PACKAGE, NIROXX

DAY CRUISER AFT CABIN PACKAGE (NOT AV. WITH WET BAR)

- Spacious aft cabin accommodating additional 2 persons with twin flush roof hatches, side windows and indirect lighting.

WET BAR PACKAGE (NOT AV. WITH DAY CRUISER CABIN)

- Wet bar module with drawers on aft deck
- Refrigerator Dometic

CDX 50 • Sink and faucet • Freshwater 100l tank, incl. cabinet w. sink, front cabin

COMPLETE ESTHEC PACKAGE - PLATINUM/WHITE



BRABUS Line Trim Package



BRABUS LINE COLOR UPGRADE Blue (Only w. BL)



BRABUS LINE COLOR UPGRADE Grey (Only w. BL)



BRABUS LINE Premium Package, All cushions blue (Only w. BL)



Premium Package, Silvertex



Premium Package, Nirosso

OPTIONAL EXTRAS

OPTIONS

- Additional seating cushions on foredeck
- Aft deck folding seats (only w/o Day Cruiser Cabin)
- Antifouling, Grey or White
- Bowthruster Side-Power SE60
- Canopy, RED
- Closed toilet wall
- Drawer type refrigerator in cockpit, Dometic CD20
- Electric grill 230V (only w. wet bar and shore power 230V)
- Electric windlass in stern, Engbo Midi 201 + remote control
- Esthec only in cockpit, Platinum/White
- Fishing targa arch (2 extra rod holders)
- Folding anchor windlass in bow + remote control (only with bow thruster)
- Gas hob with sink in front cabin (only with FW system)
- Harbor cover for aft deck, Sunbrella RED (only with aft cabin)
- Harbor cover for fore deck, RED
- Harbor cover for wet bar option, Sunbrella RED
- Heater Webasto AT3900 (not available with Airconditioning)
- Hull color Grey
- LED courtesy lights, front cabin and cockpit

- LED deck and cockpit lights, 11pcs (incl. in premium package)
- Livewell STBD aft storage
- Search light
- Seats, Niroxx
- Second drawer type refrigerator in cockpit, Dometic CD20
- Shore Power 230V with 40Ah charger
- Shower on Aft Deck
- Side rails
- Sink in front cabin
- Sliding sun roof, aft deck
- Sun shade on foredeck, for stationary use
- Sundeck cushions for aft deck, Niroxx (only with Day Cruiser Cabin)
- Sundeck cushions for aft deck, Silvertex (only w. Day Cruiser Cabin)
- Sundeck cushions on fore deck, Niroxx
- Sundeck cushions on fore deck, Silvertex
- Teak table on front deck
- Underwater lights
- Waterski pole
- Wood floor in front cabin

PRE-RIGGING

- Mercury upgrade package, Active Trim, VV Mobile, TDS

ELECTRONICS

- Chartplotter Garmin GPSMap 1222 Touch
- Chartplotter Garmin GPSmap 922
- Communication Garmin VHF300i
- Intelliducer
- Radar GMR18 18HD
- Sonar module Garmin GSD
- Twin Chartplotter Garmin GPSMap 1222 Touch
- Twin Chartplotter Garmin GPSmap 922

AUDIO OPTIONS

- Audio upgrade2, 1 x subwoofer on aft deck and 5ch amplifier (only w. UpgradeAudio)
- Audio upgrade1, 4 x speakers + 2x 4ch amplifier
- Control unit for Fusion system, Front Cabin
- Control unit for Fusion system, Helm
- Fusion Entertainment system, incl. 4 x speakers



SUNBED ON FOREDECK

The foredeck features a large sunbed with cup holders and optional cushions.



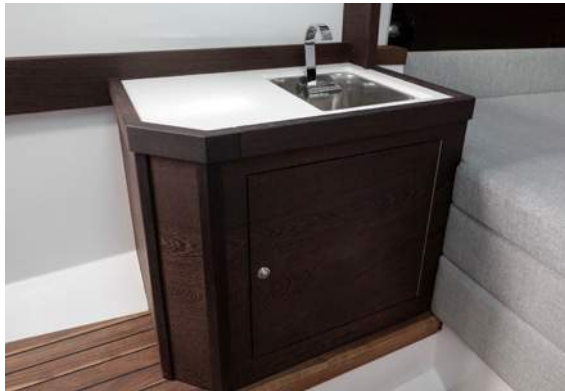
AFT CABIN BERTH

The optional day cruiser aft cabin offers a bright and roomy interior which comfortably sleeps two persons and has roof hatches and windows on each side for maximum light intake.



AFT CABIN SUNBED

The aft cabin can be equipped with optional cushions for a second sunbed onboard.



CABINET

The cabinet in the forecabin can be equipped with an optional sink with faucet and a gas hob. If you prefer to have a kitchen module in the cockpit instead (C/SC) please have a look in the layout section at the alternative layout of the cockpit.



Additional seating cushions on foredeck



Aft deck folding seats (only w/o Day Cruiser Cabin)



Antifouling, Grey or White



Bowthruster Side-Power SE60



Closed toilet wall



Drawer type refrigerator in cockpit, Dometic CD20



Electric grill 230V (only w. wet bar and shore power 230V)



Esthec only in cockpit, Platinum/White



Fishing targa arch (2 extra rod holders)



Folding anchor windlass in bow + remote control (only with bow thruster)



Gas hob with sink in front cabin (only with FW system)



Harbor cover for aft deck, Sunbrella RED (only with aft cabin)



Harbor cover for fore deck, RED



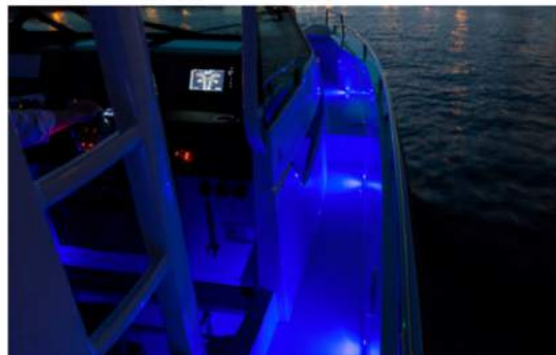
Heater Webasto AT3900 (not available with Airconditioning)



Hull color Grey



LED courtesy lights, front cabin and cockpit



LED deck and cockpit lights, 11pcs (incl. in premium package)



Livewell STBD aft storage



Search light



Seats, Niroxx



Second drawer type refrigerator in cockpit, Dometic CD20



Shore Power 230V with 40Ah charger



Shower on Aft Deck



Side rails



Sink in front cabin



Sliding sun roof, aft deck



Sun shade on foredeck, for stationary use



Sundeck cushions for aft deck, Niroxx (only with Day Cruiser Cabin)



Sundeck cushions for aft deck, Silvertex (only w. Day Cruiser Cabin)



Sundeck cushions on fore deck, Niroxx



Sundeck cushions on fore deck, Silvertex



Teak table on front deck



Underwater lights



Waterski pole



Wood floor in front cabin



Mercury upgrade package, Active Trim, VV Mobile, TDS



Chartplotter Garmin GPSMap 1222 Touch



Chartplotter Garmin GPSMap 922



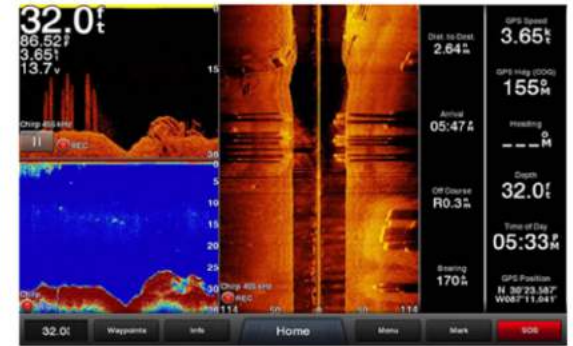
Communication Garmin VHF300i



Intelliducer



Radar GMR18 18HD



Sonar module Garmin GSD



Twin Chartplotter Garmin GPSMap 1222 Touch



Twin Chartplotter Garmin GPSMap 922



Audio upgrade2, 1 x subwoofer on aft deck and 5ch amplifier (only w. UpgradeAudio)



Audio upgrade1, 4 x speakers + 2x 4ch amplifier



Control unit for Fusion system, Front Cabin



Control unit for Fusion system, Helm



Fusion Entertainment system, incl. 4 x speakers





OFFICIAL AXOPAR DEALERS

UK & Scotland
Portugal
Monaco
Malta
Andalucia, Spain
Egypt

Please visit our website www.axoparlondongroup.com for details of your local office or e-mail: info@axoparlondongroup.com